



## Instructions For Doc McStuffins Height Chart

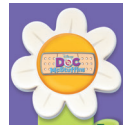
1. Print out all 7 pages.
2. Cut along the outline.\*
3. Piece the height chart together.
4. Hang it up.

*Note: Cutting is intended for grown-ups only.\**

**Catch all-new episodes  
of Doc McStuffins  
every Friday in September on**



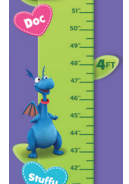
1  
Overlap & Tape ----



2  
Overlap & Tape ----



3  
Overlap & Tape ----



4  
Overlap & Tape ----



5  
Overlap & Tape ----



6  
Overlap & Tape ----



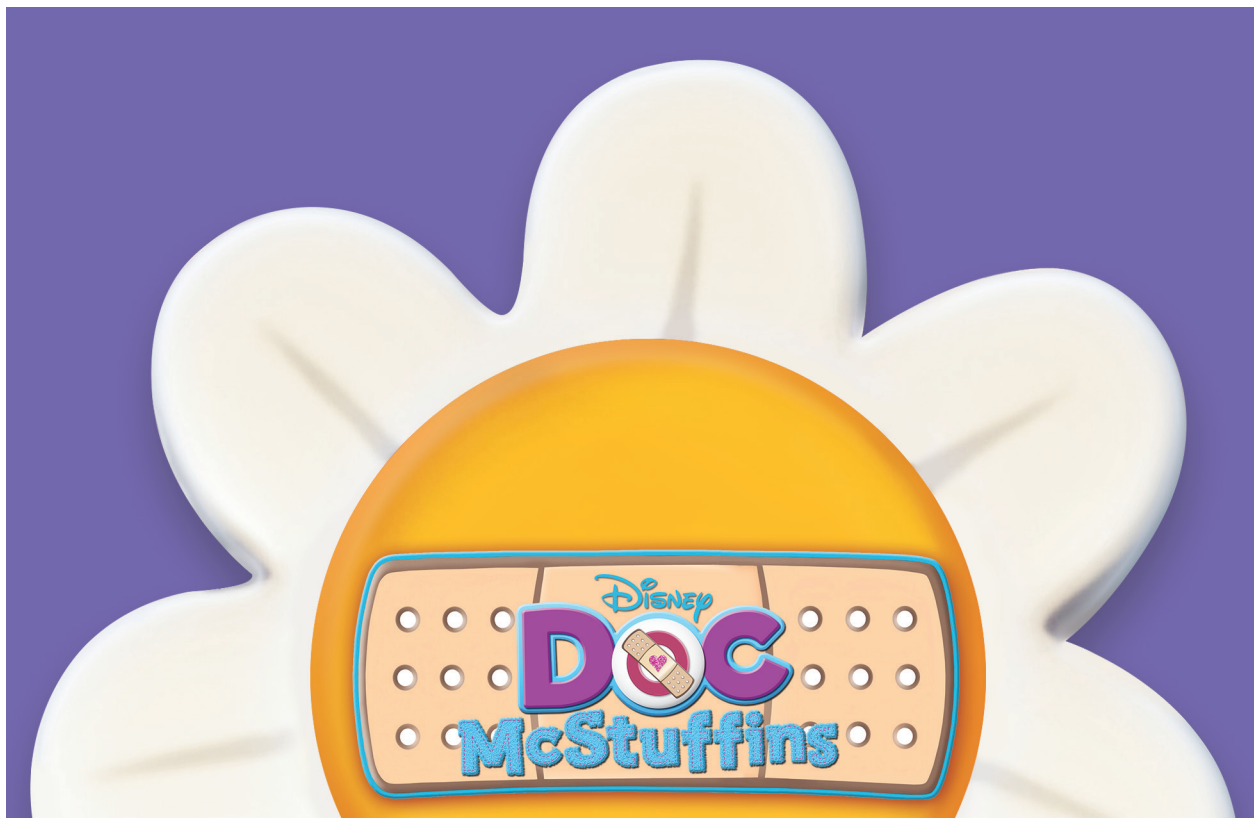
7



1

First Piece  
(Top)

Cut along line  
-----



Cut along line  
-----

2

Second Piece

Cut along line

Cut along line

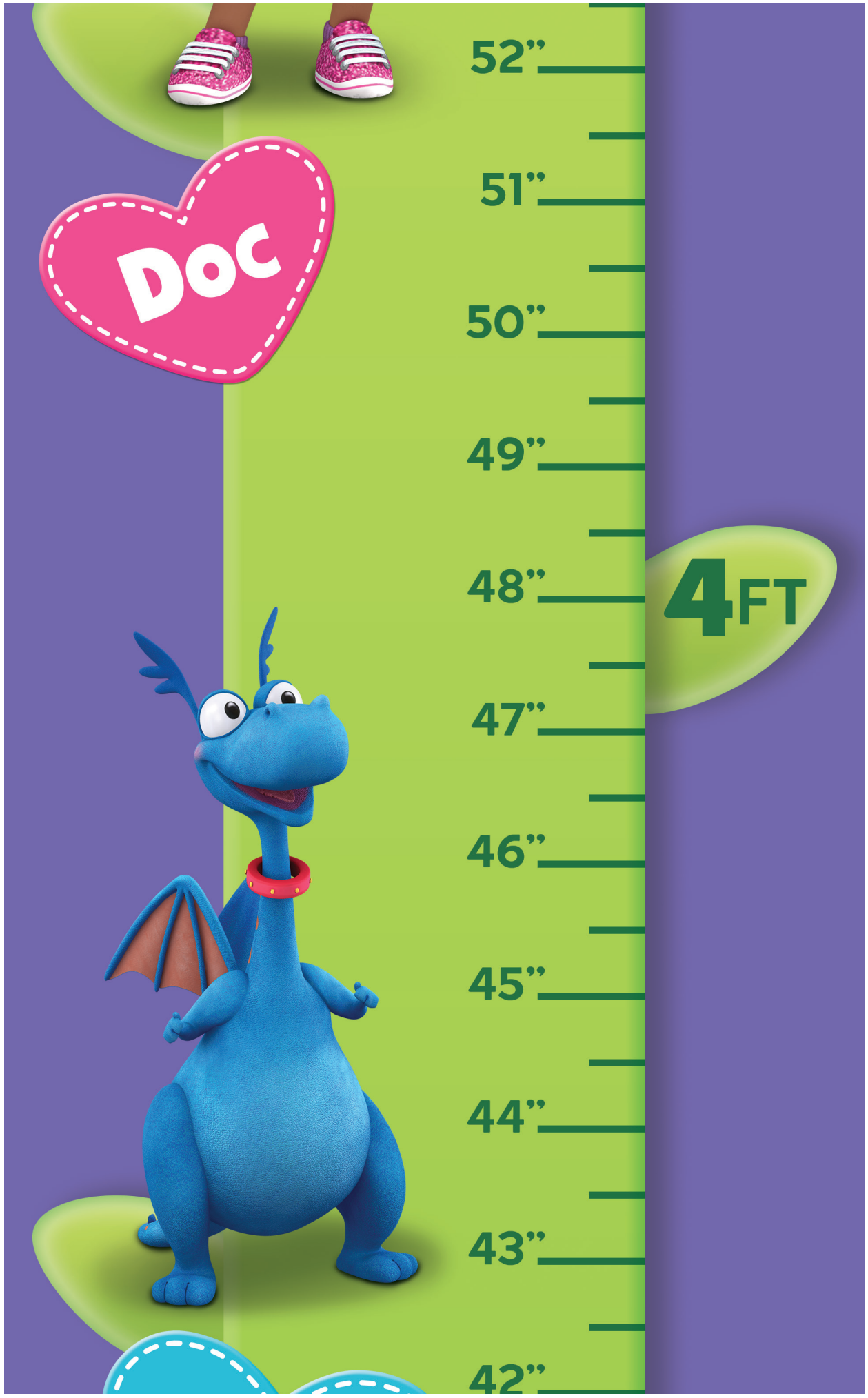


3

Third Piece

Cut along line

Cut along line





4

Fourth Piece

Stuffy

Cut along line



Lambie

41"

40"

39"

38"

37"

36"

35"

34"

33"

32"

Cut along line

3FT

5

Fifth Piece

Cut along line

Cut along line



Chilly

31"

30"

29"

28"

27"

26"

25"

24"

23"

22"

21"

2FT

6

Sixth Piece

Cut along line

Cut along line



20"

19"

18"

17"

16"

15"

14"

13"

12"

11"

1 FT

7

Seventh Piece  
(Bottom)

Cut along line

Cut along line



10"

9"

8"

7"

6"

5"

4"

3"

Disney  
Junior<sup>SM</sup>

©Disney J#7067